

PINNACLE

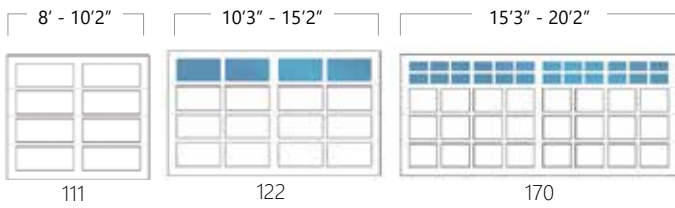


PINNACLE SPECS

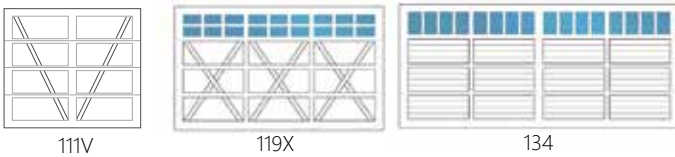
LIMITED LIFETIME WARRANTY †

Panel Styles See pages 24-29 of the catalog for all available panel styles.

23/24 gauge steel or 14 gauge aluminum.



Available in steel only:



Available in aluminum only:



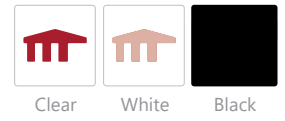
Window Tint

Insulated glass options are available for most window types. Glass and acrylic have different tints.

Glass/Acrylic



Laminate



Insulation

Add insulation for thermal efficiency, noise reduction, durability, and minimal upkeep.



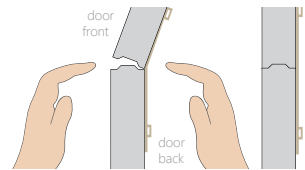
Insulated Frame Upgrade

Hardware

Includes roller, track and accessories for a strong and lasting door system.



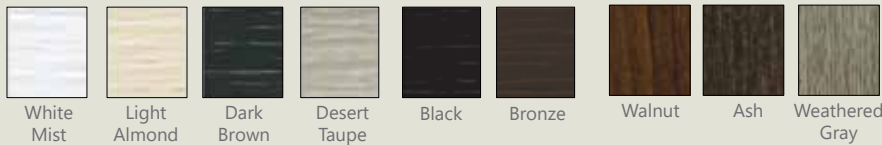
Limited Lifetime Warranty †



Full pinch-proof joint is available in steel and aluminum Pinnacle.

Standard Steel Paint Colors

Long-Lasting baked-on enamel paint.



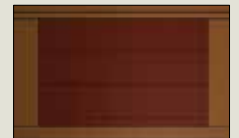
Wood Grain

Sample Duo-Tone Finish Option

Combine two color choices on one Pinnacle door. Choose two complementary finishes to enhance the look of your home.



Ash Wood Grain & Weathered Gray Steel



Signal Brown & Mahogany Brown

Popular Powder Coat Finishes

Steel (embossed) or Aluminum (smooth)



Solid



Metallic



Texture

Smooth or embossed textures are available on this door.



Embossed Steel
Painted or Powder Coated



Smooth Aluminum
Powder Coated

*** Please obtain physical samples before ordering. ***

† See manufacturer's written warranty for details and limitations.

CONTACT YOUR MARTIN DOOR DEALER TODAY

Door Builder

Use your own home photo to configure a custom garage door in minutes!



2828 S 900 W, Salt Lake City, UT 84119
1-800-388-9310
martindoor.com

