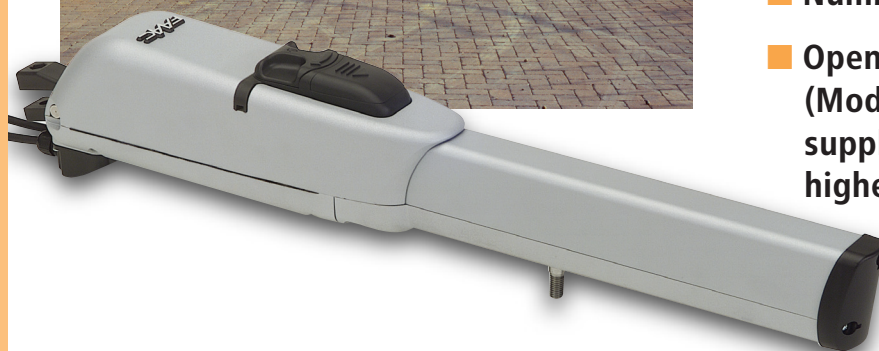


# 413 - 24 Vdc



# FAAC

for swing gates  
with single-leaf length of 1.8 m (2,5 m with electric lock)



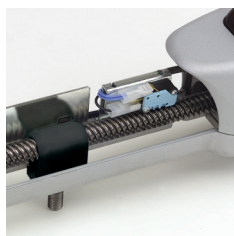
- Operator with OFF AXIS thrust
- Built-in mechanical stop for opening and closing
- Available with and without limit switch
- Coupling of the half-bodies by gasket
- Release device-key protected and easy to operate
- Numbered locks 1-36 (optional)
- Opening-closing limit switch (Mod. LS) 24 Vdc power supplied to guarantee the highest security
- Management of the limit switches: stops and deceleration
- Aluminium body completely double coated guaranteeing a higher resistance to atmospheric agents



■ Release device-key protected and easy to operate



■ Horizontal cable exit for installations close to the ground



■ Easy adjustment through access from the top

## SPECIFICATIONS

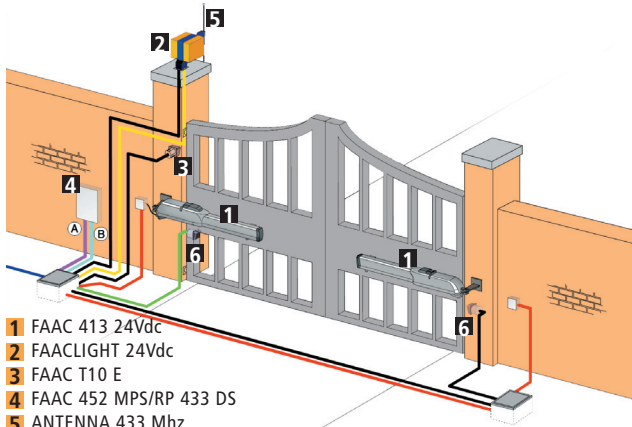
Non-reversing electro-mechanical low voltage screw actuator for swing-leaf gates with "OFF-AXIS" thrust • Maximum leaf length 2.5 m • Max use type and frequency at 20° C 100% • Pillar installation • Leaf opening inwards or outwards • Max traction/thrust force of 250 daN • Max opening angle 110° • Rod speed 1.6 cm/s • Rod effective stroke 300 mm (350 mm without mechanical stops) • Power supply 24 Vdc • Absorbed power 70 W • Overall dimensions (Length x Width x Height) 785x105x148 mm • Protection class IP44 • Operating ambient temperature -20°C ÷ +55°C • Release device key "protected" • Aluminium body completely double coated.

# 413 - 24 Vdc



- 1 Aluminium body completely double-layer coated guaranteeing a higher resistance to atmospheric agents
- 2 Coupling of the half-bodies by gasket
- 3 Toroidal transformer
- 4 Emergency batteries (optional)
- 5 424 D LS control board

## INSTALLATION LAYOUT



- 1 FAAC 413 24Vdc
- 2 FAACLIGHT 24Vdc
- 3 FAAC T10 E
- 4 FAAC 452 MPS/RP 433 DS
- 5 ANTENNA 433 Mhz
- 6 FAAC SAFEBEAM

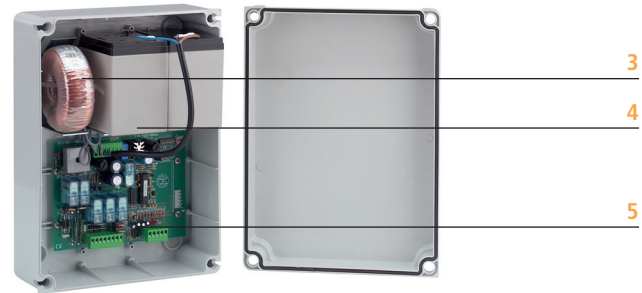
Low voltage cabling	Power cabling (230V)
(A) { 3 cable 3x0,5 1 cables 2x0,5	(B) { 2 cables 3x1,5+T 1 cable 2x1,5+T 1 cable 2x1,5

N.B.: Cable diameters in mm<sup>2</sup>

Technical specifications	413-24 Vdc	413 LS-24 Vdc
Power supply	24 Vdc	
Absorbed power	70 W	
Absorbed current	3 A	
Thermal protection	-	
Starting capacitor	-	
Thrust force	250 daN	
Piston rod length	300 mm (350 mm without mechanical stops)	
Rod extension speed	1,6 cm/sec	
Single leaf max length*	2,5 m	
Type and use frequency at 20°C	100%	
Minimum cycles/hour at 20°C	~ 75	
Operating ambient temperature	-20° C ÷ +55° C	
Operator weight	6,5 Kg	
Dimensions	785 x 105 x 148	
Protection class	IP 44	
Limit switches	NO	YES
Opening and closing mechanical stops	YES	

\*For leaves exceeding the length of 1,8 m (each leaf) an electric lock is necessary

Model	Use			Control board
	Single leaf max length (m)	No. of leaves	Use frequency (cycles/hour)	
413 - 24 Vdc	1.80 (2,5 m with electric lock)	1	Continuous duty	Not Included
413 LS - 24 Vdc	1.80 (2,5 m with electric lock)	1	Continuous duty	Not Included



## Specifications of 424 D LS control board

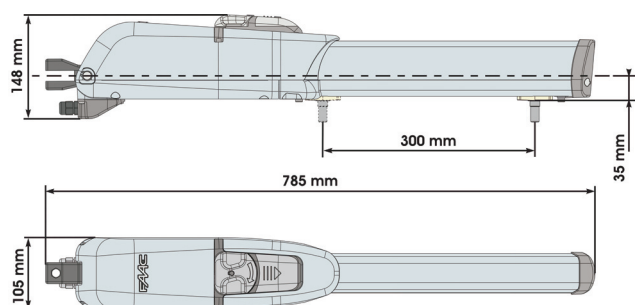
Supply voltage of transformer	230 Vac (+6% - 10%) 50 Hz
Supply voltage of control unit	22 Vac (+6% - 10%) 50 (60) Hz
Absorbed power	3 W
Motor max load	2 x 70 W
Accessories max load	24 Vdc 500 mA
Flashing lamp/Courtesy light max. load	24 Vdc 15 W max
Operating ambient temperature	-20°C ÷ +55°C
Protection fuses	4
Function logics	Automatic/Stepped automatic/Semiautomatic/Stepped semiautomatic/Condo type
Thrust force	Four levels adjustable on display
Opening/closing time	Through self-learning during programming
Pause time	Through self-learning during programming
Leaf delay	2 levels
Deceleration	Opening/closing
Enclosure dimensions	305x225x125 mm
Protection class	IP 55

**Terminal board inputs** - Power supply 24 Vac/Battery supply/Encoder/Total opening/Pedestrian opening/Opening-closing safety devices/Stop/Opening-closing limit-switch

**Terminal board outputs** - 24 Vdc power supply to accessories/24 Vdc motors/24 Vdc courtesy light-flashing lamp/12 Vdc/Vac Electric lock

**Rapid connector** - Card receivers/Decoding cards

## DIMENSIONS



Values in mm

# FAAC

FAAC S.p.A. Via Benini, 1  
40069 Zola Predosa - Bologna (Italy)  
tel. +39 051 61724 · fax +39 051 758518  
www.faacgroup.com

